

Product data sheet

Specifications



socket, for RSB1A160 RSB2A080
relays, Harmony Electromechanical
Relays, 10A, screw connec to rs,
separate contact

RSZE1S48M

Product availability: Stock - Normally stocked in distribution facility

Main

Range of Product	Harmony Electromechanical Relays
Device short name	RSZ
Product or Component Type	Socket
Product compatibility	Plug-in relay RSB with 1 C/O contact at 16 A Plug-in relay RSB with 2 C/O contact at 8 A
Contacts type and composition	2 C/O
[Ith] conventional free air thermal current	10 A

Complementary

Shape of pin	Flat
[Ue] rated operational voltage	< 250 V AC
Contact terminal arrangement	Separate
Connections - terminals	Screw connectors, 1 x 0.25...1 x 2.5 mm ² AWG 22...AWG 14) flexible with cable end Screw connectors, 2 x 0.25...2 x 1 mm ² AWG 22...AWG 17) flexible with cable end Screw connectors, 1 x 0.5...1 x 2.5 mm ² AWG 20...AWG 14) solid without cable end Screw connectors, 2 x 0.5...2 x 1.5 mm ² AWG 20...AWG 16) solid without cable end
Tightening torque	< 0.8 N.m M3
Fixing mode	By screw (panel) Clip-on (35 mm symmetrical DIN rail)
[Uimp] rated impulse withstand voltage	3.6 kV
Overvoltage category	III
Pollution degree	3
Sale per indivisible quantity	10
Width	0.6 in (15.5 mm)
Net Weight	0.11 lb(US) (0.05 kg)

Environment

IP degree of protection	IP20 conforming to IEC 60529
Standards	IEC 61984
Product Certifications	CSA UL
Marking	CE
Ambient Air Temperature for Storage	-40...185 °F (-40...85 °C)

Price is "List Price" and may be subject to a trade discount – check with your local distributor or retailer for actual price.

Ambient Air Temperature for Operation	-13...185 °F (-25...85 °C)
---------------------------------------	----------------------------

Ordering and shipping details

Category	US10CP221128
Discount Schedule	0CP2
GTIN	3389110260083
Returnability	Yes
Country of origin	CN

Packing Units

Unit Type of Package 1	PCE
Nbr. of units in pkg.	1
Package 1 Height	0.669 in (1.700 cm)
Package 1 Width	2.441 in (6.200 cm)
Package 1 Length	3.150 in (8.000 cm)
Package weight(Lbs)	1.376 oz (39.000 g)
Unit Type of Package 2	BB1
Number of Units in Package 2	10
Package 2 Height	2.756 in (7.000 cm)
Package 2 Width	3.543 in (9.000 cm)
Package 2 Length	6.693 in (17.000 cm)
Package 2 Weight	15.097 oz (428.000 g)
Unit Type of Package 3	S03
Number of Units in Package 3	240
Package 3 Height	11.811 in (30.000 cm)
Package 3 Width	11.811 in (30.000 cm)
Package 3 Length	15.748 in (40.000 cm)
Package 3 Weight	23.314 lb(US) (10.575 kg)

Contractual warranty

Warranty (in months)	18
----------------------	----



Environmental Data

Schneider Electric aims to achieve Net Zero status by 2050 through supply chain partnerships, lower impact materials, and circularity via our ongoing “Use Better, Use Longer, Use Again” campaign to extend product lifetimes and recyclability.

[Environmental Data explained >](#)

[How we assess product sustainability >](#)



Environmental footprint

Total lifecycle Carbon footprint	0.5 kg CO2 eq.
Environmental Disclosure	Product Environmental Profile
Carbon footprint of the manufacturing phase [A1 to A3]	0.5 kg CO2 eq.
Carbon footprint of the distribution phase [A4]	0 kg CO2 eq.
Carbon footprint of the installation phase [A5]	0 kg CO2 eq.
Carbon footprint of the use phase [B2, B3, B4, B6]	0 kg CO2 eq.
Carbon footprint of the end-of-life phase [C1 to C4]	0 kg CO2 eq.

Use Better



Materials and Substances

Packaging made with recycled cardboard	Yes
Packaging without single use plastic	Yes
EU RoHS Directive	Compliant
REACH Regulation	Free of Substances of Very High Concern above the threshold
California proposition 65	WARNING: This product can expose you to chemicals including: Nickel compounds, which is known to the State of California to cause cancer, and Di-isodecyl phthalate (DIDP), which is known to the State of California to cause birth defects or other reproductive harm. For more information go to www.P65Warnings.ca.gov

Use Longer



Lifetime extension

Repair	No
--------	----

Use Again

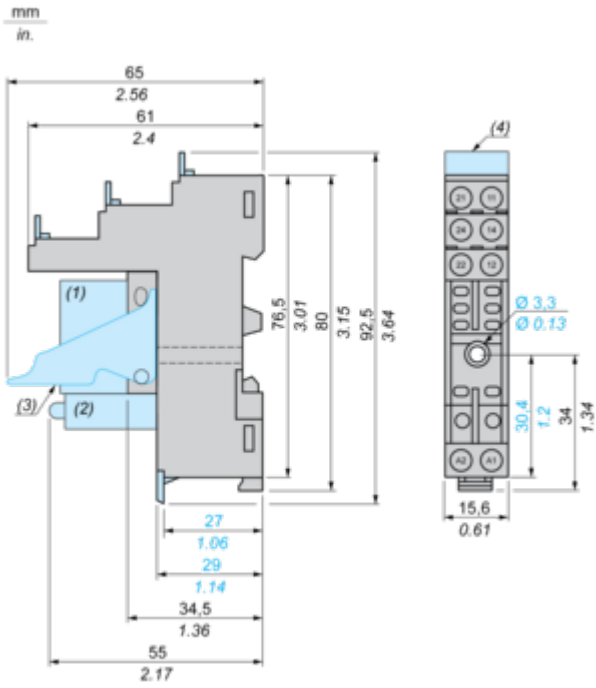


Repack and remanufacture

Circularity Profile	No need of specific recycling operations
Take-back	No

Dimensions Drawings

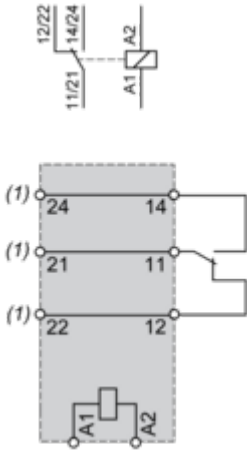
Dimensions



- (1) Relays
- (2) Protection module
- (3) Maintaining clamp
- (4) Legend

Connections and Schema

Wiring Diagram

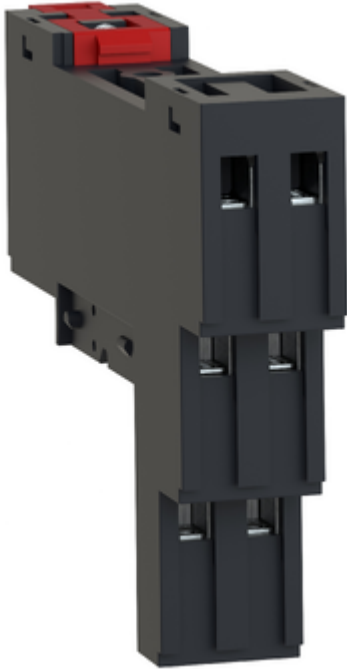


(1) Terminals 11 and 21, 14 and 24, 12 and 22 must be linked for this references

NOTE: For DC input, A1 have to be +, otherwise it would short circuit from protection module

Image of product / Alternate images

Alternative





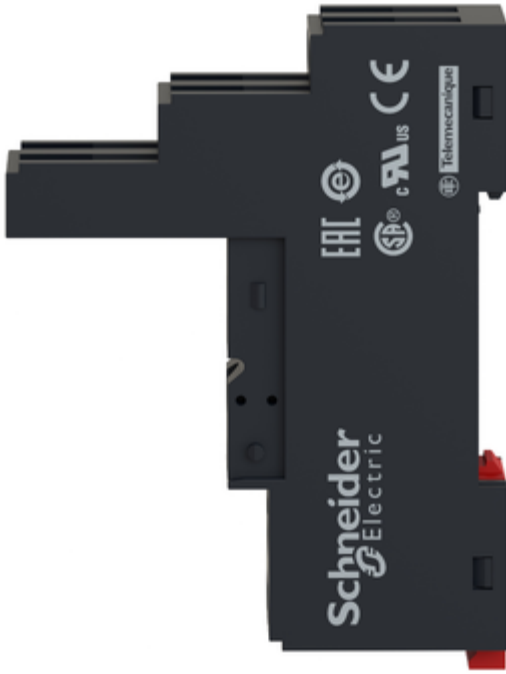


Image of product in real life situation

